

| H | E | F | A |[®]

by | E | N | V |

Healthy Environments For All[®]

Returning to a
post-COVID-19 world.



What is HEFA?

A design service which helps our clients prepare their existing or new spaces to be ready for a post-pandemic work environment.

Purpose

Understanding your needs in order to provide a robust solution for a post-COVID world.

Types of Services

- Survey and space assessment
- Stakeholder interviews
- Recommendations Report
- Design, budgeting and implementation

STRATEGIC PLANNING

GUIDING SOLUTIONS

UNDERSTANDING YOUR NEEDS

- Utilization of Visioning and Implementation Committees
- Providing Quantitative and Qualitative Reports for Business Decision Making
- Hybrid vs. Virtual vs. In-Person Productivity Analysis
- Headcount Analysis
- Interdepartmental Needs Assessments
- Adaptive Re-Use Planning
- Real Estate Evaluations
- Long Range Facility Planning / Site Selections

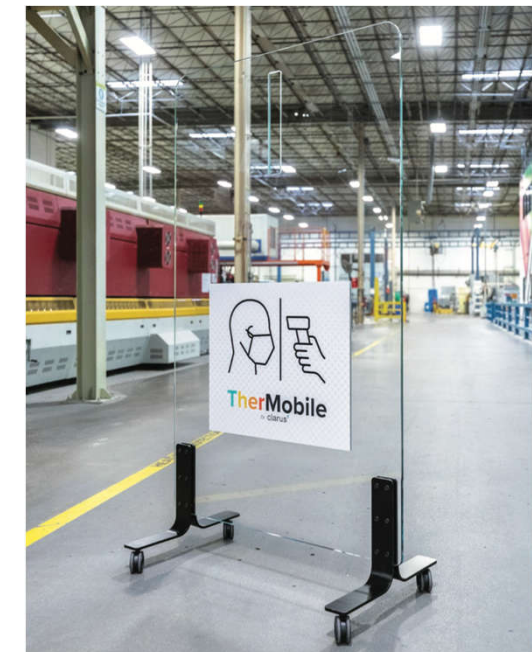
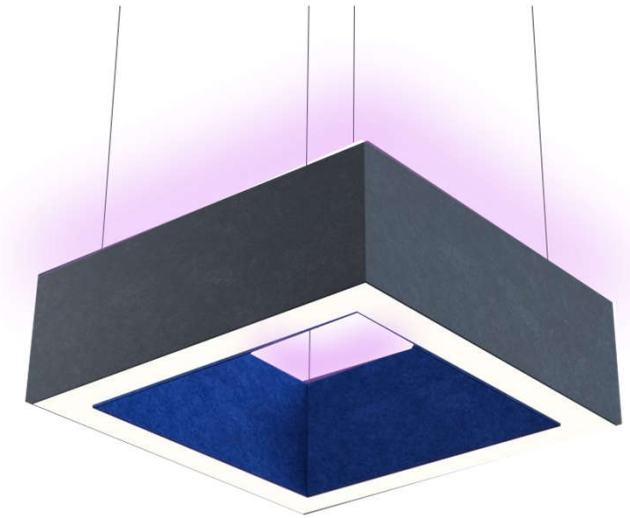


OPPORTUNITIES WHICH REQUIRE LITTLE OR NO CONSTRUCTION

Such as...

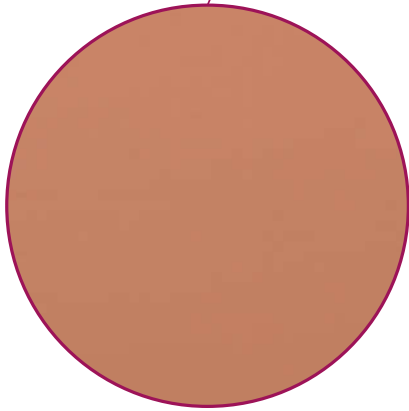
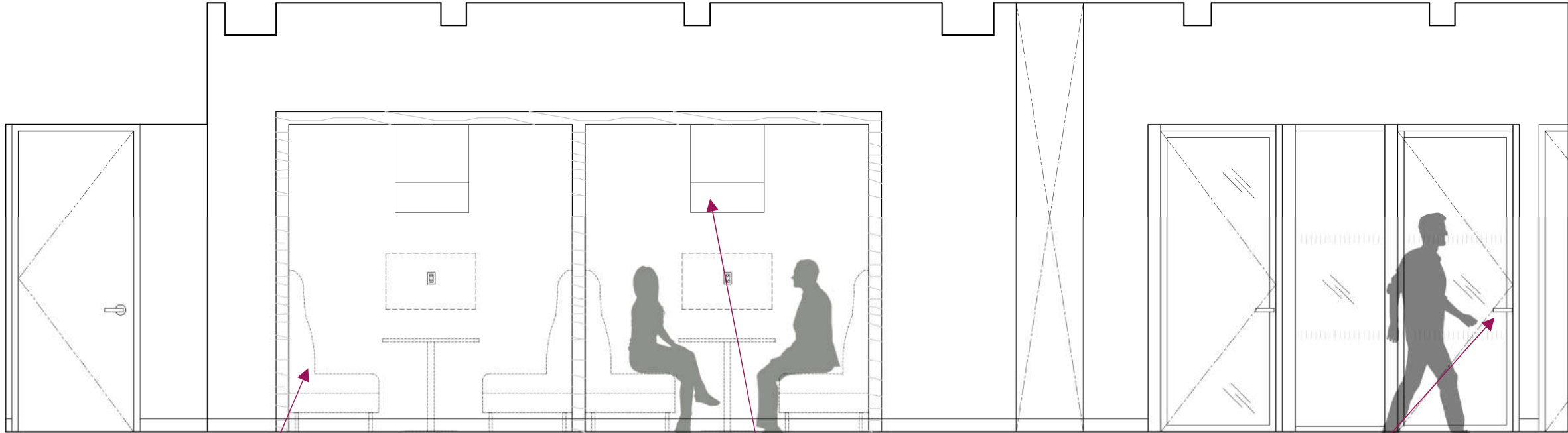
- No-touch faucets, trash receptacles, paper towel dispensers.
- Automated toilet-seat covers in restrooms.
- Modification of door handles, or foot-powered or automated door openers .
- Controlled use of UV lighting to kill germs.
- Antimicrobial fabric material on furniture in high-traffic areas that can be bleached.
- Increase of air filtering devices.
- Create places to store PPE and purposefully designed hand sanitizing stations.
- Custom flooring design for office traffic flow management.
- Instructional / reminder signage design (hand washing, social distancing, etc.).
- Rearranging pantry, meeting room, and reception seating.

Example of UV Light Fixture

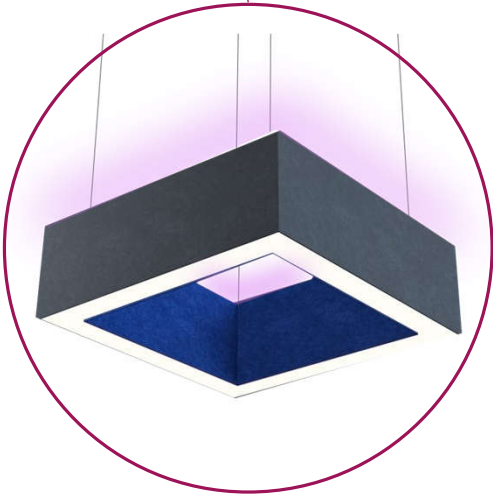


Example of Protective Barriers

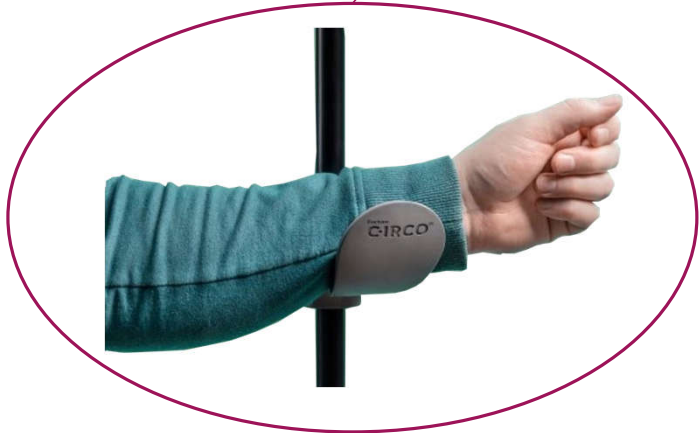
EXAMPLES OF LITTLE OR NO CONSTRUCTION MODIFICATION



Antimicrobial textiles in high traffic areas that are bleach cleanable.



Light fixtures with integrated UV performance to terminate airborne virus/pathogen travel.

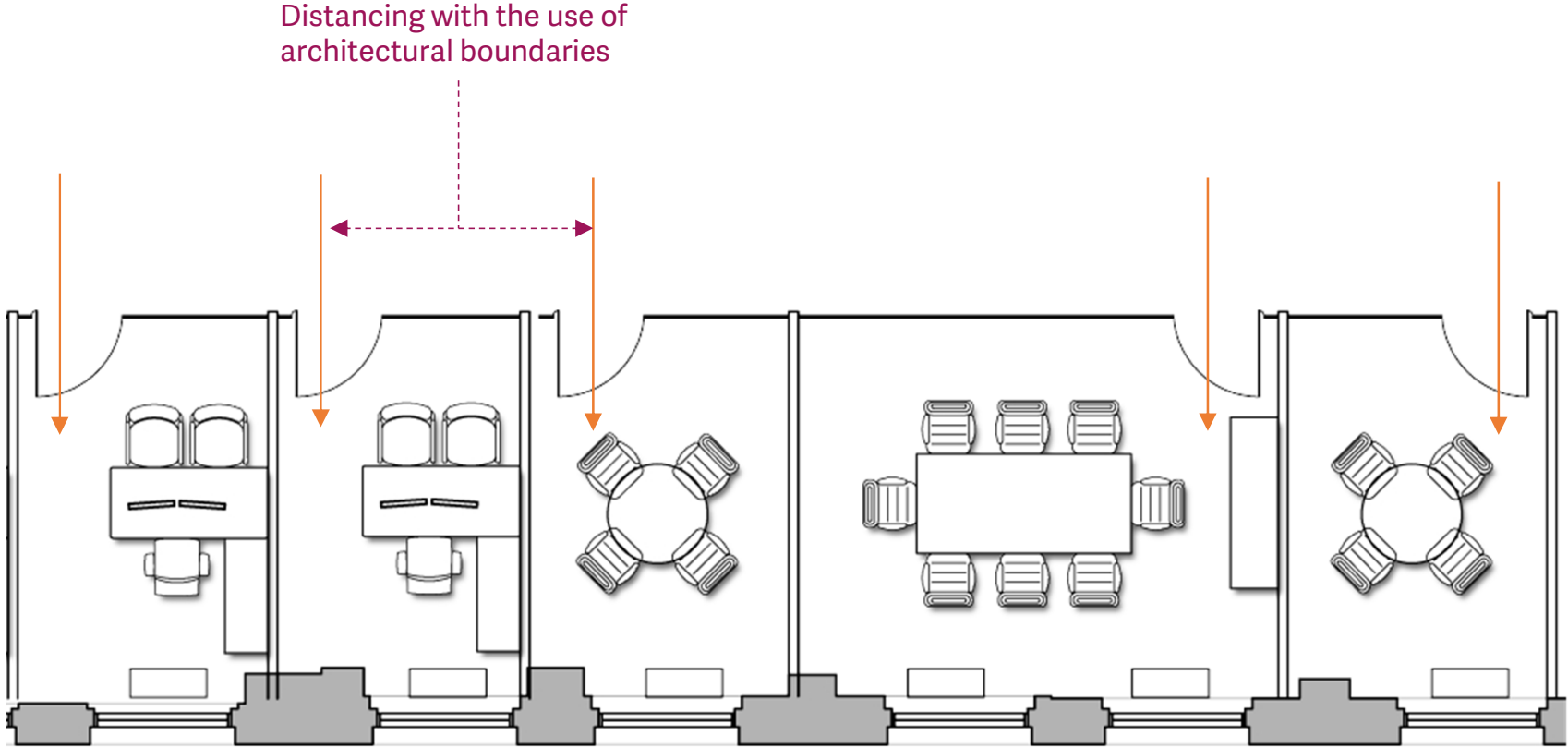


No touch door handles to limit surface spread of germs.

EXAMPLES OF LITTLE OR NO CONSTRUCTION MODIFICATION

Such as...

- Consider entry points into offices and conference rooms for social distancing
- Ability to modify existing office front systems and associated rooms
- Better acoustics with entry doors spanning large than 6' between rooms



EXAMPLES OF LITTLE OR NO CONSTRUCTION MODIFICATION

Such as...

- Evaluate what manual functions that can be sensor activated or touchless
- Will these items benefit us day 1 and day 2 if modified
- Inherent anti-microbial coatings
- Universal access cleaning supplies



Location	Type	Drawing Tag	Program	Product Type	Manuf.	Spec	Website/Spec sheet
Womens/Mens Restroom							
	Original	A2	Restroom Accessories	Papertowel dispenser	American Speciaties	0457-9 Surface mount, above counter	
	Alt 1	A2	Restroom Accessories	Automatic papertowel dispenser	Bobrick	B-2974 - surface mount, continuous roll style (battery operated)	Spec Sheet
	Original	A3	Restroom Accessories	Papertowel and waste receptacle	American Speciaties	6467-9 Surface mounted papertowel/trash	
	Alt 2	A3	Restroom Accessories	Automatic papertowel and waste receptacle	Bobrick	B-39619 with 3974-150 auto-sensor dispenser (battery operated) surface mounted, continuous roll style	Spec Sheet
	Alt 3	A11 (new item, 1 per restroom)	Restroom Accessories	Paper disinfectant wipe dispenser	Glaro	F1028-SA-AW1 free standing 2 gallon wipe dispenser and trahs	Spec Sheet
	Original	door hardware set 3	Doors and Hardware	lockset	KABA	Powerplex 2000 Keypad lock	
	Alt 4	door hardware set 3	Doors and Hardware	lockset	Schlage	C0 100 Standalone Electric lock, Storeroom function - 626AM finish	Spec Sheet
	Alt 5 - part 1	door hardware set 3	Doors and Hardware	lockset	Schlage	Fixed Dummy trim ND170 - 626AM finish (provide fixed handle on inside and outside of door)	
	Alt 5 - part 2	door hardware set 3	Doors and Hardware	accessories	Rockwood	K1062 Kickplate (door exterior)	Spec Sheet
	Alt 5 - part 3	door hardware set 3	Doors and Hardware	accessories - door foot pull	FootPull	FP03 Hands Free Door Opener (door interior)	Spec Sheet

OPPORTUNITIES WHICH REQUIRE
**FURNITURE MODIFICATIONS/
MINOR CONSTRUCTION**



Such as...

- Update current furniture configurations (desking, reception desk, etc.).
- Add shields/panels.
- Install new desking.
- Additional hand washing sinks.
- Convert or create a space to a sick room, private or nurse's office.



Office PODS solution for private space

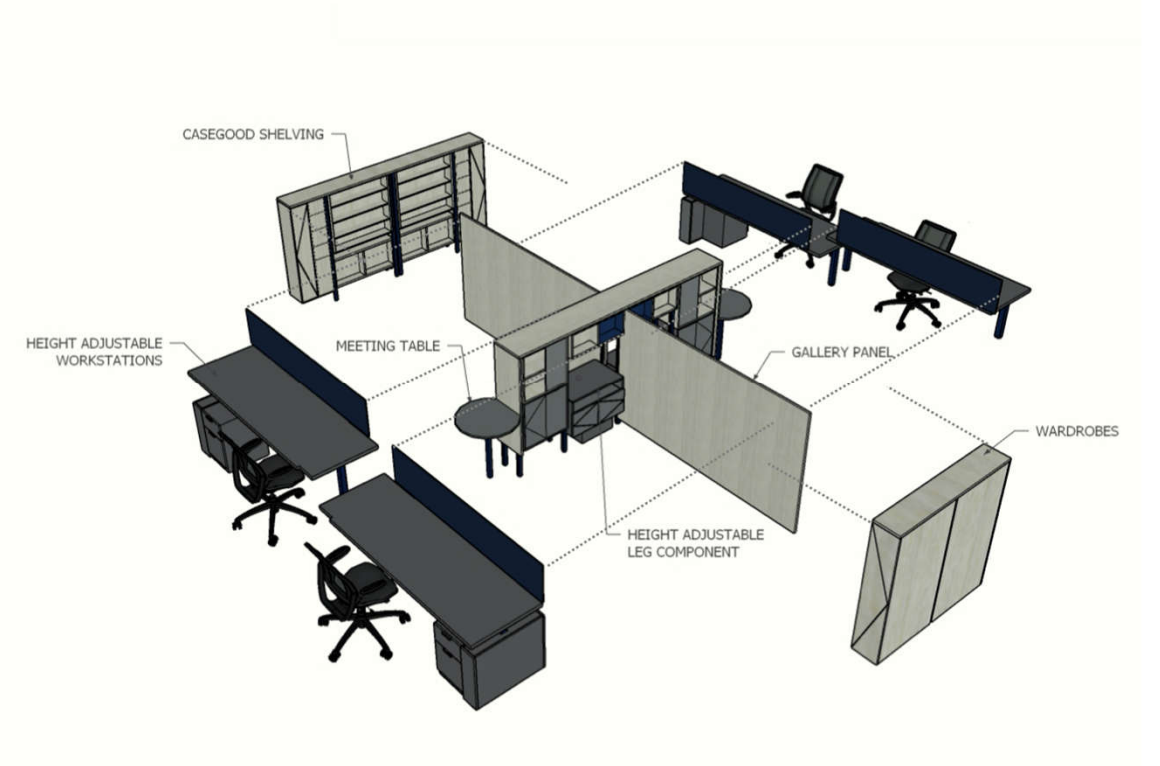
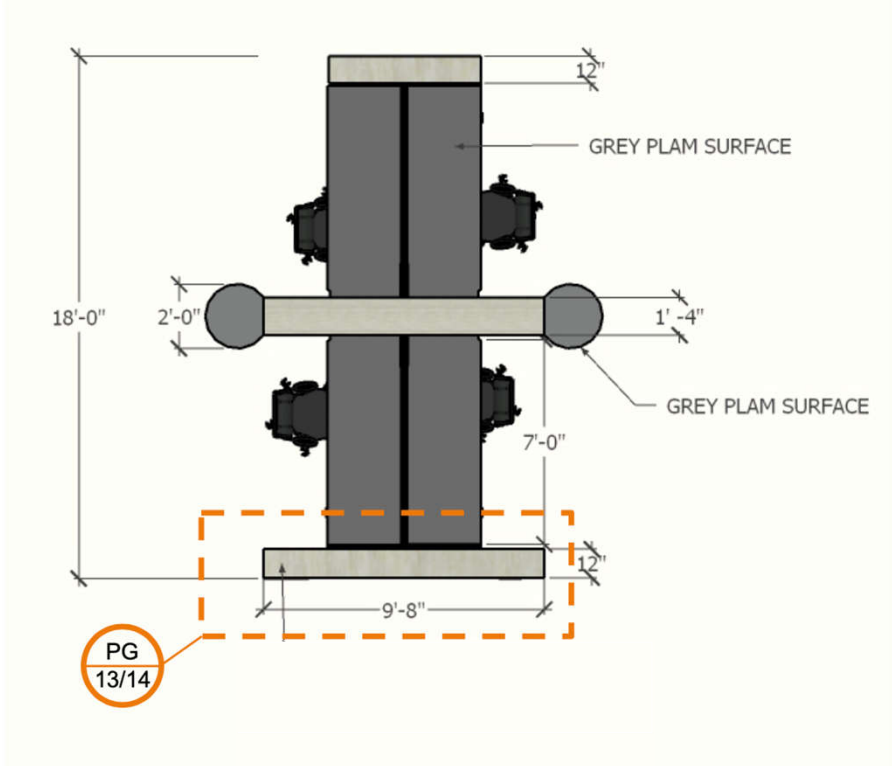


One example of retrofit solution for open workstations designed by ENV specifically post COVID-19

EXAMPLES OF FURNITURE MODIFICATIONS

Furniture Solutions

- Provide physical barriers to keep 6' minimum spacing between employees with existing conditions.

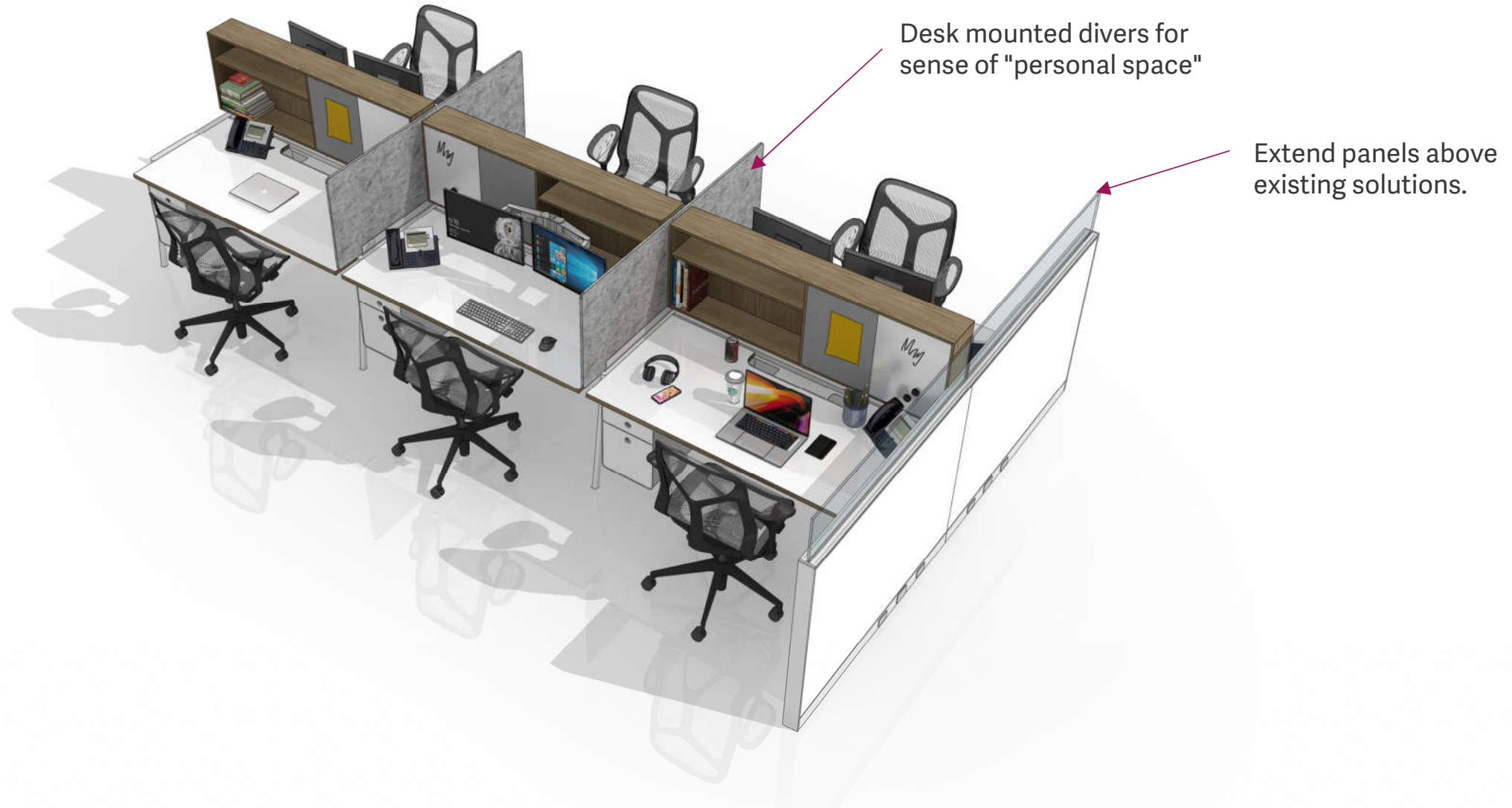


Examples of new desking solutions for open workstations designed by ENV specifically post COVID-19.

EXAMPLES OF FURNITURE MODIFICATIONS

Furniture Solutions

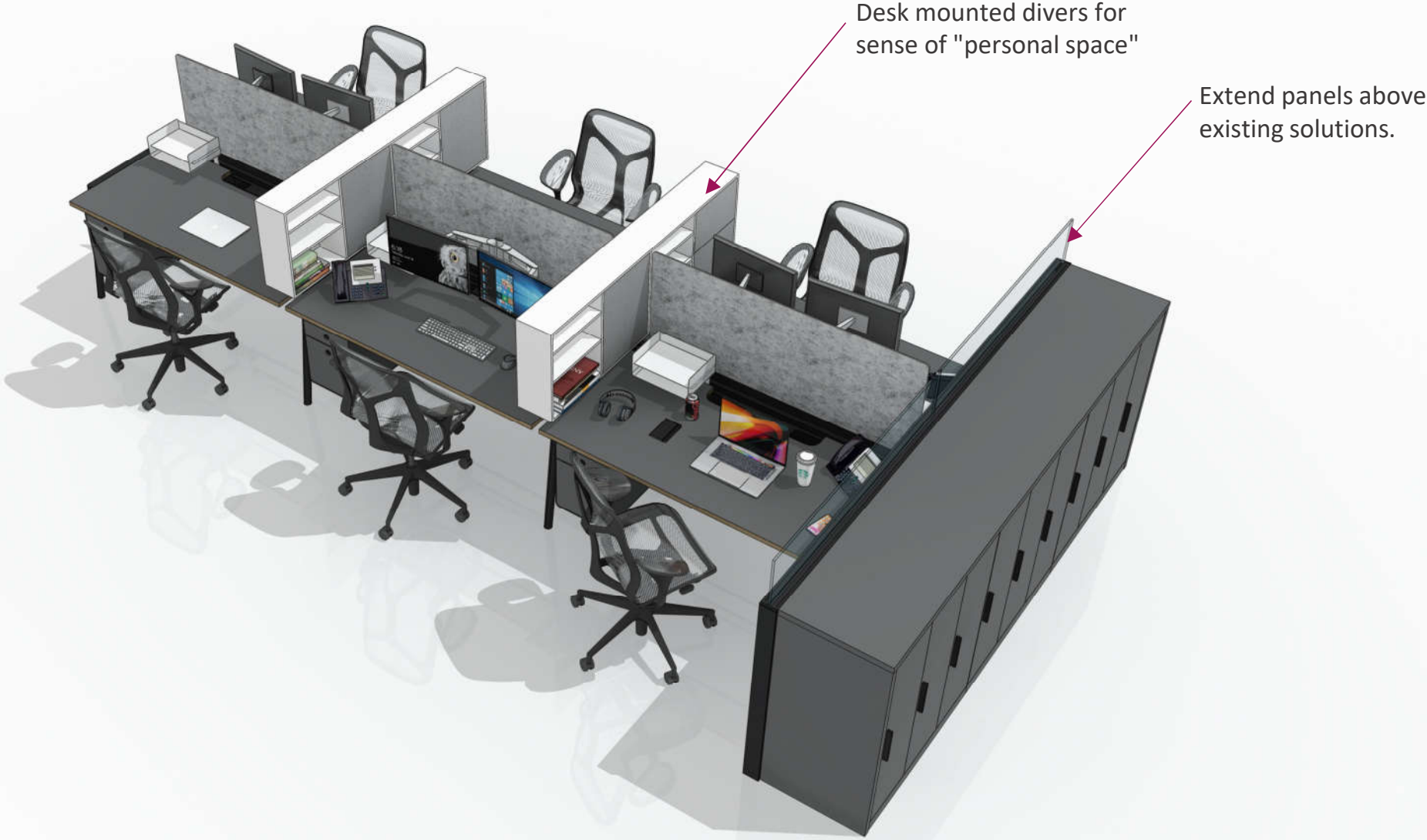
- Provide physical barriers to define spacing between employees with existing conditions.



EXAMPLES OF FURNITURE MODIFICATIONS

Furniture Solutions

- Provide physical barriers to define spacing between employees with existing conditions.



Examples of new desking solutions for open workstations designed by ENV specifically post COVID-19.

EXAMPLES OF FURNITURE MODIFICATIONS

Furniture Solutions

- Furniture solutions for private office or single person setting.



- 1 HEIGHT ADJUSTABLE DESK
- 2 STORAGE (COAT)
- 3 STORAGE (FILES)
- 4 ACCOUSTIC PANELS
- 5 DROP CEILING | UV LIGHT, COVE LIGHT & VENTILATION
- 6 PRIVACY CURTAIN

Examples of new desking solutions for open workstations designed by ENV specifically post COVID-19.

OPPORTUNITIES THAT REQUIRE BEHAVIORAL CHANGES

Such as...

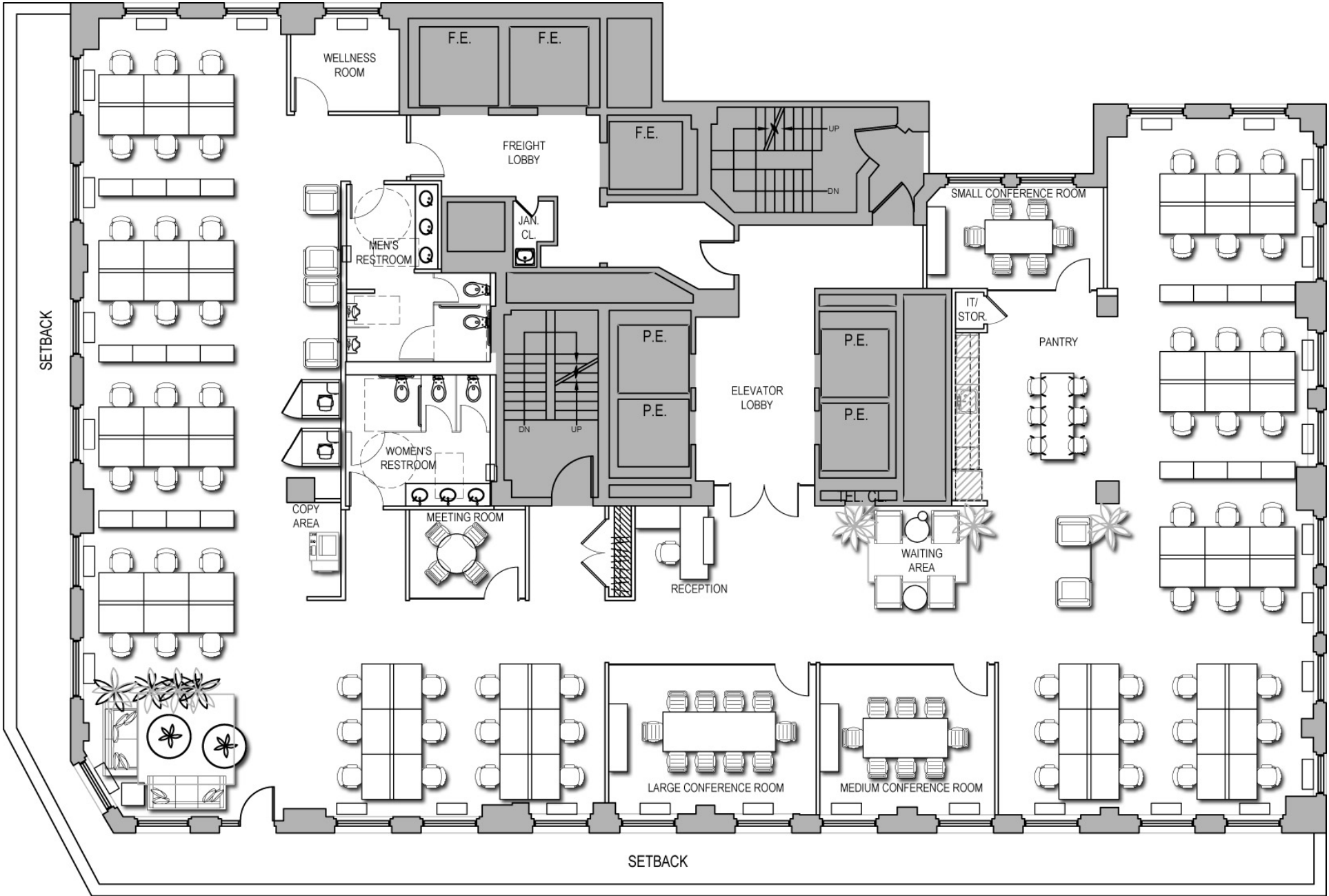
- 6' distance between coworkers.
- Seats and meeting areas to have every other or third seat for day 1 configuration.
- Define circulation paths.



EXAMPLES OF BEHAVIORAL CHANGES

Rethink circulation...

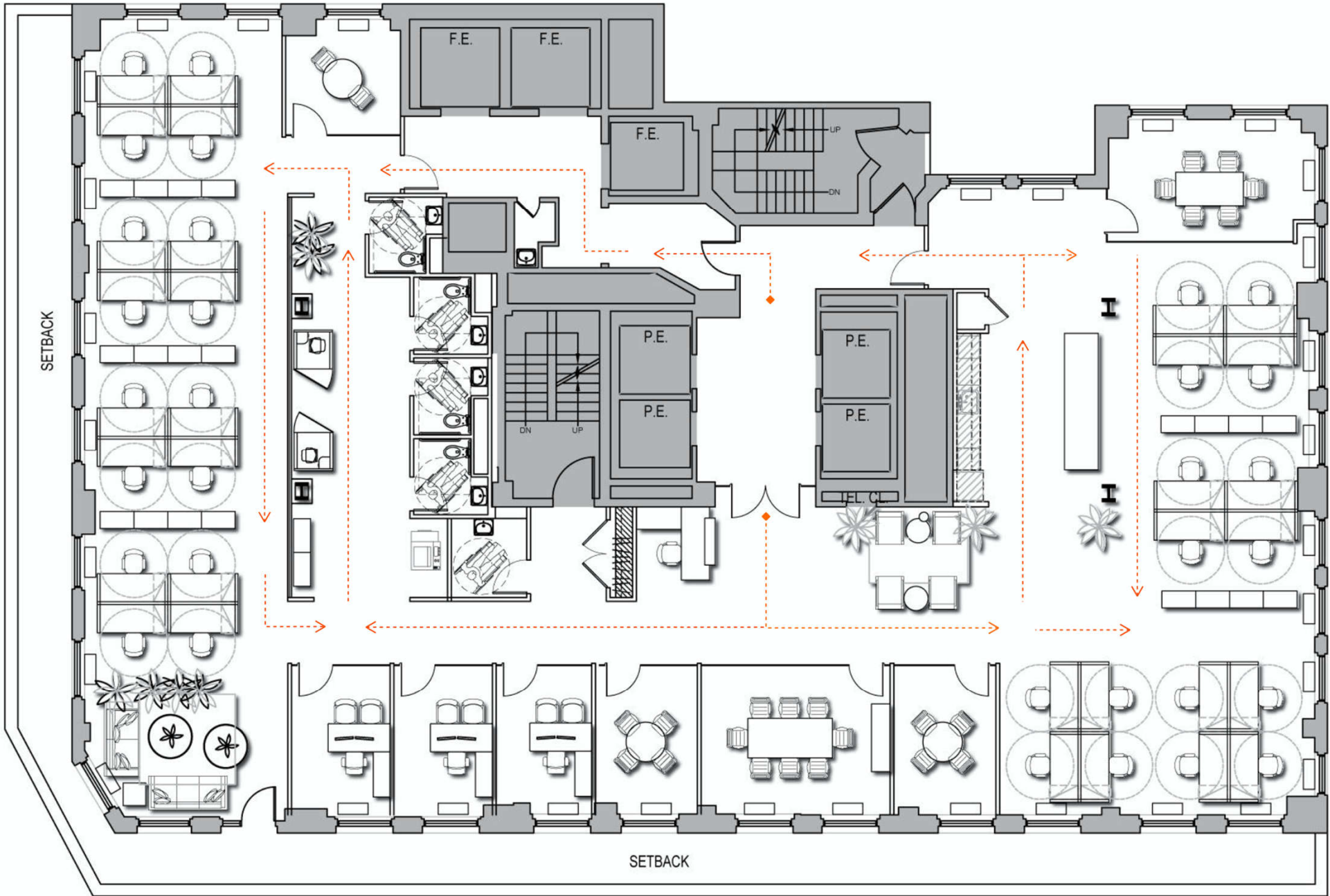
- Discuss staggered working hours.
- Day 1 : Day 2 – how will the space function today and in 2 years.
- Specify directional paths for social distancing and flow of the current workplace.
- Branded directional graphics or modify finishes to create paths and boundaries.



EXAMPLES OF BEHAVIORAL CHANGES

Rethink circulation...

- Discuss staggered working hours.
- Day 1 : Day 2 – how will the space function today and in 2 years.
- Specify directional paths for social distancing and flow of the current workplace.
- Branded directional graphics or modify finishes to create paths and boundaries.



OPPORTUNITIES FOR NEW OR TEMPORARY POLICIES/PROCEDURES/PROCESS

Such as...

- Specify environmentally friendly germ-killing cleaning products .
- Gloves mask, sanitizer availability.
- Discuss staggered working hours.
- Flexible team schedules which varies by day of week.
- Development of a digital handbook of changes, expectations, email reminders, etc.
- Branded fabric indoor-use office-specific masks (different from a mask used during commuting).
- Consider indoor-only office shoes.



POLICIES AND PROCEDURES

Signage, Graphics and Finishes

- Provide graphic barrier to keep social distancing between employees with existing conditions.
- Indicate directional flow for circulation.





Design.

Innovation.

Vision.

Resiliency.

| E | N | V |